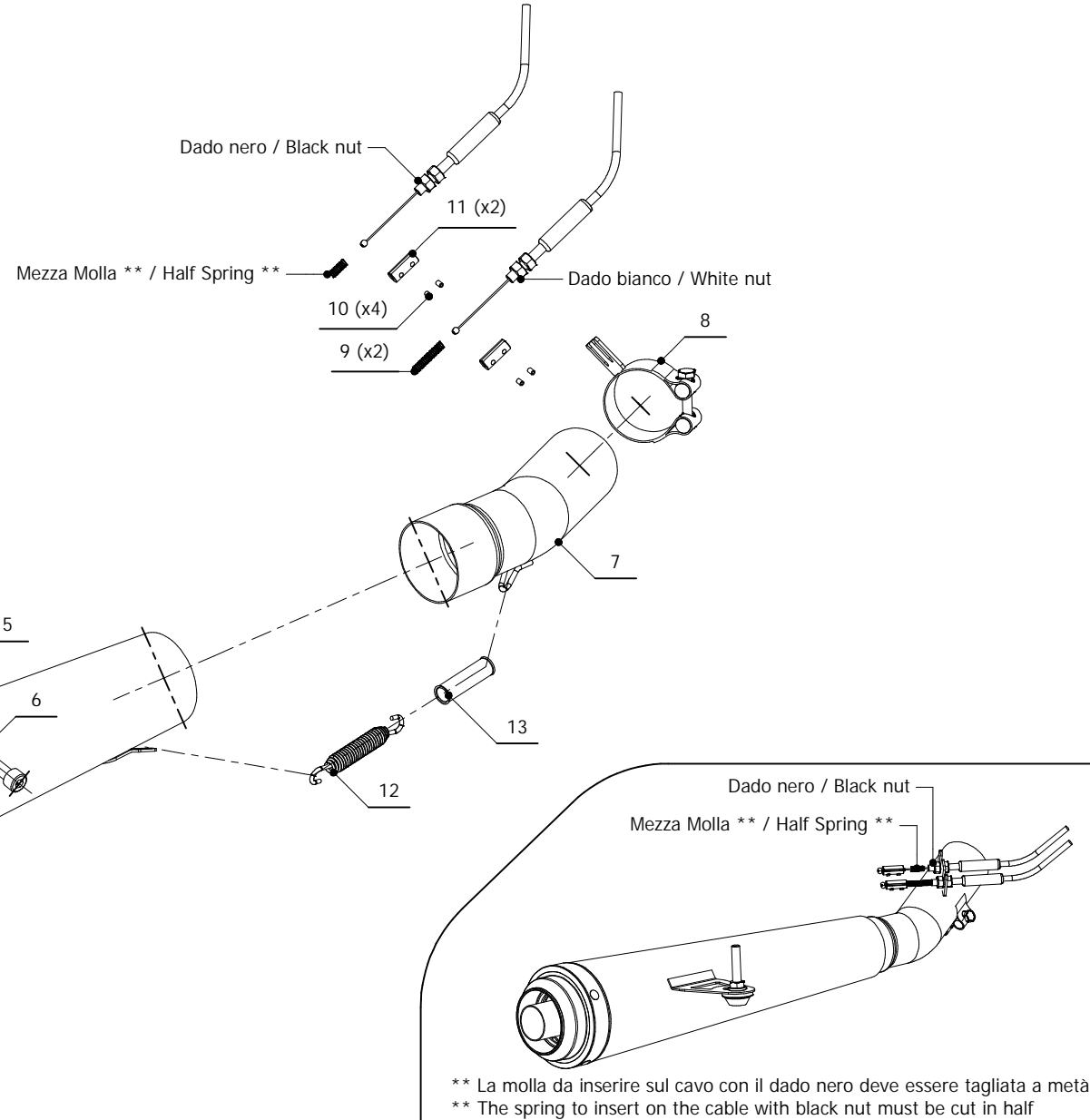


ELENCO PARTI / PARTS LIST

#	QTÀ / QTY	DESCRIZIONE / DESCRIPTION	CODICE / CODE
1	1	Anello Seger / Seger ring	50.73.218.1
2	1	Db Killer forato / Drilled DB killer	50.DK.030.0
3	1	Silenziatore / Muffler	X-cone Plus
4	1	Dado 8 MA flangiato / Flanged nut 8 MA	50.73.052.1
5	1	Rondella alluminio / Aluminium washer	50.73.291.1
6	1	Vite M8x50 / Screw M8x50	50.73.074.1
7	1	Tube di raccordo / Link pipe	9773K021S2
8	1	Fascetta passacavi / fairlead clamp	50.SS.139.0
9	2	Molla / Spring	50.73.142.1
10	4	Grani M3 / Grub screws M3	50.73.140.1
11	2	Morsetti in alluminio / Aluminium clamps	50.73.138.1
12	1	Molla / Spring	50.71.080.1
13	1	Tube in gomma per molla / Rubber pipe for spring	50.73.210.1


APPLICAZIONI / APPLICATIONS

CODICE / CODE	TUBO / PIPE	MUFFLER / SILENZIATORE	FASCETTA / CLAMP	OMOLOGAZIONE / HOMOLOGATION
K.022.LP3	INOX / STAINLESS STEEL	INOX / STAINLESS STEEL	INOX / STAINLESS STEEL	OMOLOGATO / HOMOLOGATED