



MODEL HONDA CB 650 F

YEAR 2014 - 2016

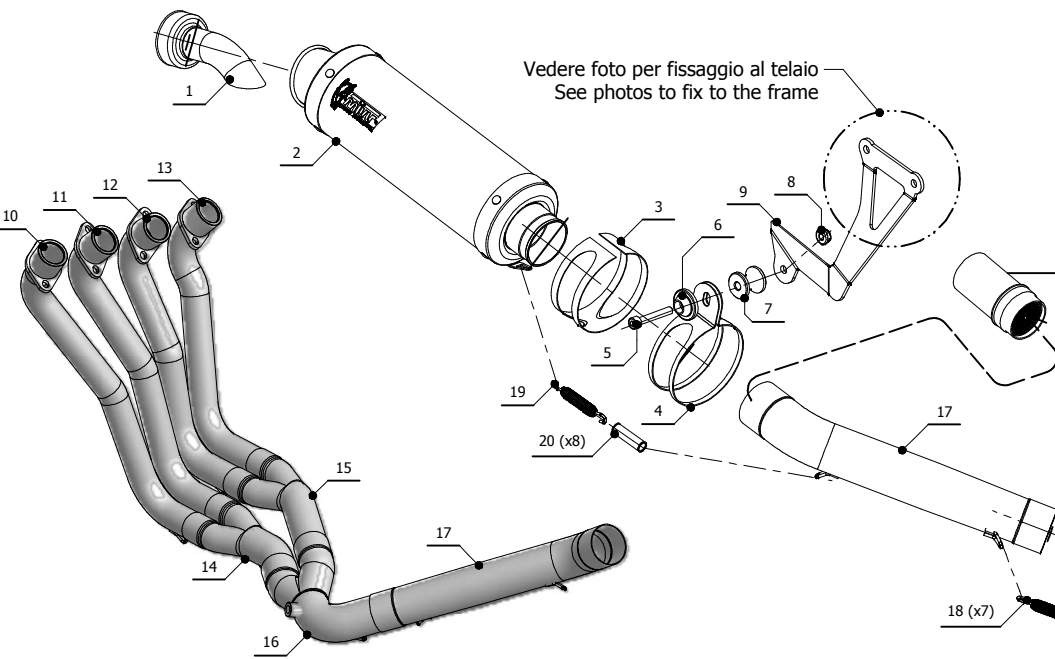
SCHEMATIC

LINE FULL SYSTEM

MUFFLER GP

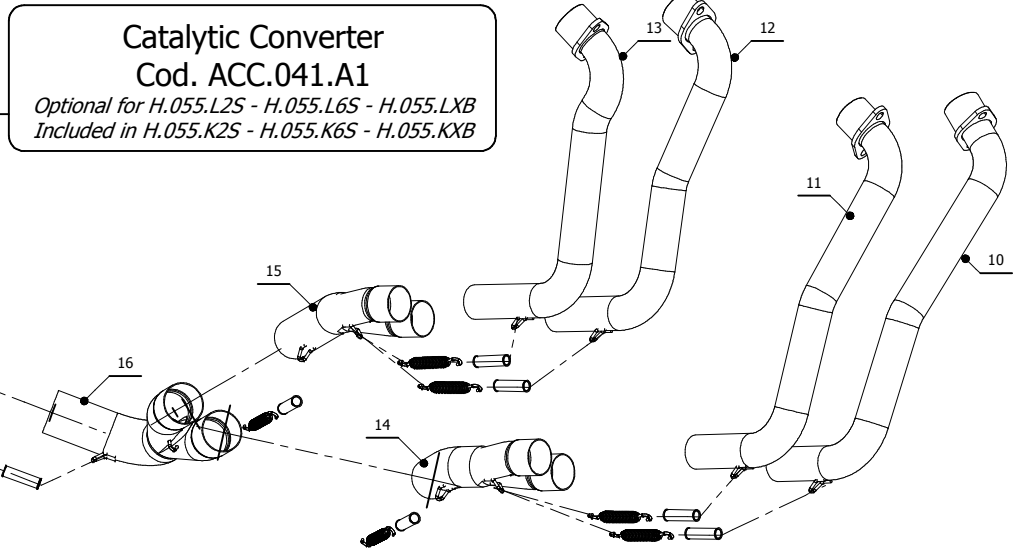
APPLICAZIONI / APPLICATIONS

CODICE / CODE	SILENZIATORE / MUFFLER	TUBO / PIPE	FASCETTA / CLAMP	NOTE
H.055.L2S H.055.L6S H.055.LXB	CARBONIO / CARBON FIBER TITANIO / TITANIUM STEEL BLACK	INOX / ST. STEEL	INOX / ST. STEEL	CATALYTIC CONVERTER NOT INCLUDED
H.055.K2S H.055.K6S H.055.KXB	CARBONIO / CARBON FIBER TITANIO / TITANIUM STEEL BLACK	INOX / ST. STEEL	INOX / ST. STEEL	CATALYTIC CONVERTER INCLUDED



Vedere foto per fissaggio al telaio
See photos to fix to the frame

Catalytic Converter
Cod. ACC.041.A1
Optional for H.055.L2S - H.055.L6S - H.055.LXB
Included in H.055.K2S - H.055.K6S - H.055.KXB



ELENCO PARTI / PARTS LIST

#	QTÀ / QTY	DESCRIZIONE / DESCRIPTION	CODICE / CODE
1	1	DB killer / DB killer	50.DK.020.0
2	1	Silenziatore / Muffler	GP
3	1	Protezione in gomma per staffa / Rubber protection for bracket	50.73.040.1
4	1	Staffa / Bracket	50.SS.001.0
5	1	Vite M8x50 / Screw M8x50	50.73.074.1
6	1	Rondella in alluminio / Aluminium washer	50.73.063.1
7	1	Distanziale in alluminio / Aluminium spacer (Øe.30 Øi.8,5 h.30)	50.SS.054.1
8	1	Dado M8 flangiato / Flanged nut M8	50.73.393.1
9	1	Staffa / Bracket	50.SS.873.0
10	1	Collettore #1 / Down pipe #1	9773H055C1A
11	1	Collettore #2 / Down pipe #2	9773H055C1B
12	1	Collettore #3 / Down pipe #3	9773H055C1C
13	1	Collettore #4 / Down pipe #4	9773H055C1D
14	1	Tubo di raccordo 2-1 / Link pipe 2-1	9773H055C1E
15	1	Tubo di raccordo 2-1 / Link pipe 2-1	9773H055C1F
16	1	Tubo di raccordo 2-1 / Link pipe 2-1	9773H055C1G
17	1	Tubo di raccordo / Link pipe	9773H055C1H
18	7	Molla media / Middle spring	50.73.359.1
19	1	Molla lunga / Long spring	50.71.080.1
20	8	Tubo in gomma per molla / Rubber pipe for spring	50.73.210.1

Fissaggio staffa 50.SS.873.1
Fitting bracket 50.SS.873.1

