



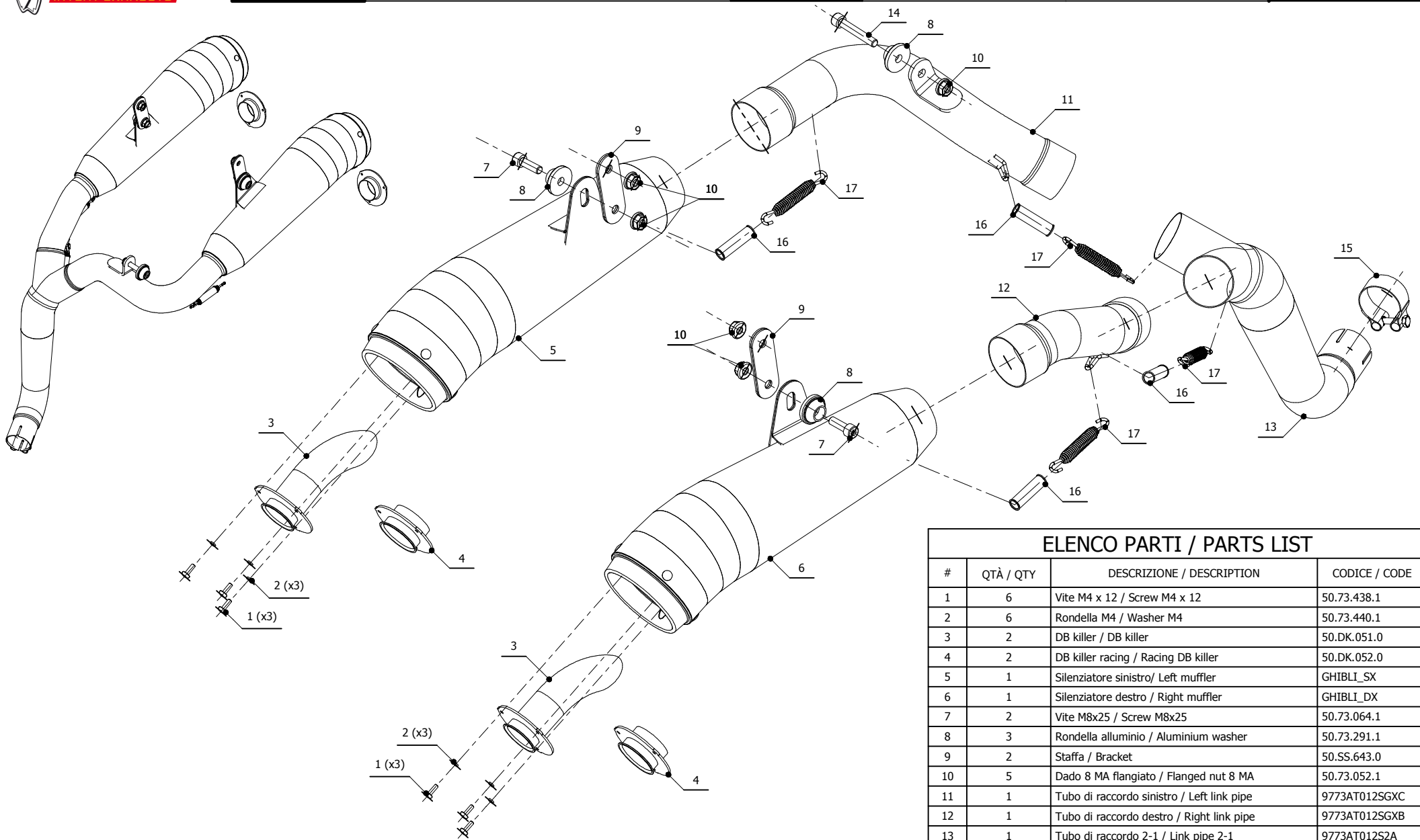
MODEL TRIUMPH SPEED TRIPLE

YEAR 2011-->

LINE SPORT

MUFFLER GHIBLI

SCHEMATIC



ELENCO PARTI / PARTS LIST

| #  | QTÀ / QTY | DESCRIZIONE / DESCRIPTION                        | CODICE / CODE |
|----|-----------|--|---------------|
| 1  | 6         | Vite M4 x 12 / Screw M4 x 12                     | 50.73.438.1   |
| 2  | 6         | Rondella M4 / Washer M4                          | 50.73.440.1   |
| 3  | 2         | DB killer / DB killer                            | 50.DK.051.0   |
| 4  | 2         | DB killer racing / Racing DB killer              | 50.DK.052.0   |
| 5  | 1         | Silenziatore sinistro/ Left muffler              | GHIBLI_SX     |
| 6  | 1         | Silenziatore destro / Right muffler              | GHIBLI_DX     |
| 7  | 2         | Vite M8x25 / Screw M8x25                         | 50.73.064.1   |
| 8  | 3         | Rondella alluminio / Aluminium washer            | 50.73.291.1   |
| 9  | 2         | Staffa / Bracket                                 | 50.SS.643.0   |
| 10 | 5         | Dado 8 MA flangiato / Flanged nut 8 MA           | 50.73.052.1   |
| 11 | 1         | Tubo di raccordo sinistro / Left link pipe       | 9773AT012SGXC |
| 12 | 1         | Tubo di raccordo destro / Right link pipe        | 9773AT012SGXB |
| 13 | 1         | Tubo di raccordo 2-1 / Link pipe 2-1             | 9773AT012S2A  |
| 14 | 1         | Vite M8x50 / Screw M8x50                         | 50.73.074.1   |
| 15 | 1         | Fascetta Ø 44/47 mm / Pipe clamp Ø 44/47 mm      | 50.FA.006.1   |
| 16 | 4         | Tubo in gomma per molla / Rubber pipe for spring | 50.73.210.1   |
| 17 | 4         | Molla media / Middle spring                      | 50.73.359.1   |

APPLICAZIONI / APPLICATIONS

| CODICE / CODE | TUBO / PIPE      | SILENZIATORE / MUFFLER | CODICE OMOL. / HOMOL. CODE |
|---------------|------------------|------------------------|----------------------------|
| AT.012.LGX    | INOX / ST. STEEL | INOX / ST. STEEL       | ME044 e9 1345              |